

## Product Data Sheet for 6663

### Product Information

**Product Long Code** 06663000  
**Customer Facing Code** 6663  
**Description** SCOTT® PERFORMANCE Hand Towels - Interfolded / White /Medium  
**PDS Reference** 28/07/2013



### Product Dimensions

**Case Contents** 15 Sleeves x 212 Sheets = 3180 Sheets

Dimension		
31.50	x	21.50
		Length x Width(cm)



### Brand Statements

Paper towels that are dispensed one at a time so they're touched only by the user, dry your hands hygienically and effectively, and help reduce costs and waste.

Ideal for: food contact areas and busy office and hotel washrooms; drying your hands quickly and comfortably with fewer towels, as they're strong and highly absorbent without breaking up when wet; caring for the environment (carries the EU Ecolabel).

Available as: medium-sized, white, 1-ply folded hand towels that have a soft and comfy feel and are made from strong, highly absorbent AIRFLEX\* fabric, safe for food use and supplied in cost-saving 'compressed' packs (with 18% more towels per case).

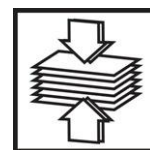
### Bullet Point

- AIRFLEX\* highly absorbent' Competitive cost in use
- Self presenting towels' Open and ready to use
- Extra soft
- Self presenting towels' Reduce consumption and Waste
- AIRFLEX\* Highly Absorbent Fabric' Strong When Wet

### Product Specifications

<b>Fold Type</b>	I	<b>Virgin Fibre(%)</b>	40
<b>Bleaching Method</b>	Elemental Chlorine Free	<b>Embossing/textured</b>	Yes
<b>Technology</b>	AIRFLEX*	<b>Folded Footprint Width (mm)</b>	105
<b>Plies</b>	1	<b>Bar Code (Case)</b>	05027375040771
<b>Recycled Fibre(%)</b>	60	<b>Colour</b>	White

### International Standards and Symbols



# Product Data Sheet for 6663

## Packaging

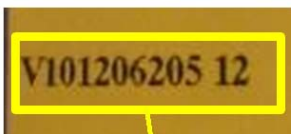
<b>Unit Of Sale</b>	Case	<b>Net Weight(kg)</b>	7.53
<b>Max Weight(kg)</b>	8.43	<b>Case Dimension (LXWXH)(cm)</b>	53 x 38 x 21.5
<b>Inner Pack Material</b>	Paper	<b>Full Pallet</b>	Yes
<b>Commodity Code</b>	48182099		

Pallet Type	LxWxH (m)	Cases per Layer	Layers per Pallet	Cases per Pallet
A2	1.20 x 1.00 x 1.23	5	5	25

## Related Products

Relationship	Product Code	Description
Fits Dispenser	6973	AQUA* Folded Hand Towel Dispenser - Interleaved / White
-"	6956	AQUARIUS* Folded Hand Towel Dispenser - C Fold / White /Small
-"	6945	AQUARIUS* Folded Hand Towel Dispenser - Interleaved / White
-"	6962	KIMBERLY-CLARK PROFESSIONAL* Folded Hand Towel Dispenser - Interleaved / Grey
-"	9962	KIMBERLY-CLARK PROFESSIONAL* Folded Hand Towel Dispenser - Interleaved / White
-"	8971	KIMBERLY-CLARK PROFESSIONAL* Stainless Steel Hand Towel Dispenser - Interleaved / Stainless steel
-"	6910	WINDOWS* Folded Hand Towel Dispenser - C Fold / White /Small

## Batch Code



Example: V11232099 10  
 V = Mill ID - Always 1 letter  
 1 = Line ID - Always 1 digit  
 12 = Hour – Always 2 digits  
 32 = Minutes – Always 2 digits  
 099 = Day 099 of the year – Always 3 digits  
 Blank Space  
 10 = Year – Always 2 digits

## Information

It is the employer's responsibility to assess the risk of the task to be undertaken and determine the correct choice of wipers for the task. The manufacturer, Kimberly-Clark, does not accept any responsibility for the incorrect choice or misuse of wipers shown in this brochure. All care has been taken to ensure that the information contained herein is as accurate as possible at the time of publication, however errors may occur and legislation concerning personal protective equipment is under constant review and may change in the lifetime of this brochure. Accordingly, the specifications for the products may be subject to change. We would advise you to contact INFOFAX if you have any queries concerning the products shown or the suitability of such products for the particular task. Always dispose of used protective equipment in a safe and appropriate manner in accordance with European, National and Local environmental regulations

**Infofax Details**                      infofax@kcc.com                      **Websites**                      www.kcprofessional.co.uk  
**Customer Service Number**                      For more information please contact Customer Service during regular office hours-0870 551 044